

21ST NOVEMBER 2025

AUTUMN 9



NGPS NEWS

Northgate Primary School Newsletter

CARER

Our beautiful values photos have arrived and they have been displayed around the school. Here is a first glance at our KS2 image for 'Empathy'. The children are very good at explaining what it means to be empathetic. Showing empathy is not always as easy.

I would love to hear your stories from home about how your child shows empathy towards others. Please send me a Class Dojo if you have a story to share so we can celebrate them in assembly next week.

Have a fun weekend, with lots of care for each other.

Warm regards

Amanda Harrison



LAST CHANCE!

BOOK YOUR CHILD'S CHRISTMAS LUNCH ON PARENT PAY BEFORE 27TH NOVEMBER!

Christmas Lunch

Serving on Thursday 11th December

MAINS
Roast Turkey
Or
Quorn Roast

SIDES
Roast Potatoes, Stuffing,
Mini Sausage, Gravy,
Broccoli & Carrots

DESSERTS
Festive Chocolate Brownie

Order on ParentPay.com no later than
Thursday 27th November.
Book in advance to avoid disappointment.

www.parentpay.com

Chartwells

DIARY DATES

Monday 24th November

Tuesday 25th November

NURSERY TRIP TO THE POST BOX
NURSERY STAY AND PLAY 2PM

Wednesday 26th November

NEW ENTRANTS 1.30PM -
ASHDOWN HALL

Thursday 27th November

DENTIST VISIT REC/NURSERY -
9AM
NURSERY STAY AND PLAY - 2.00

Friday 28th November

ASH CLASS SWIMMING
Y5/6 BOYS FOOTBALL ICC
15.30-16.45



Christmas Performances

Dates for your diary!

Nursery

Tuesday 2nd December

1.45pm

Reception

Monday 15th December

2pm

Tuesday 16th December

9.30am

KS1

Monday 8th December

2.00pm



Tuesday 9th December

9.30am

Wednesday 10th December

9.30am

Please hand in your ticket requests to the school office.





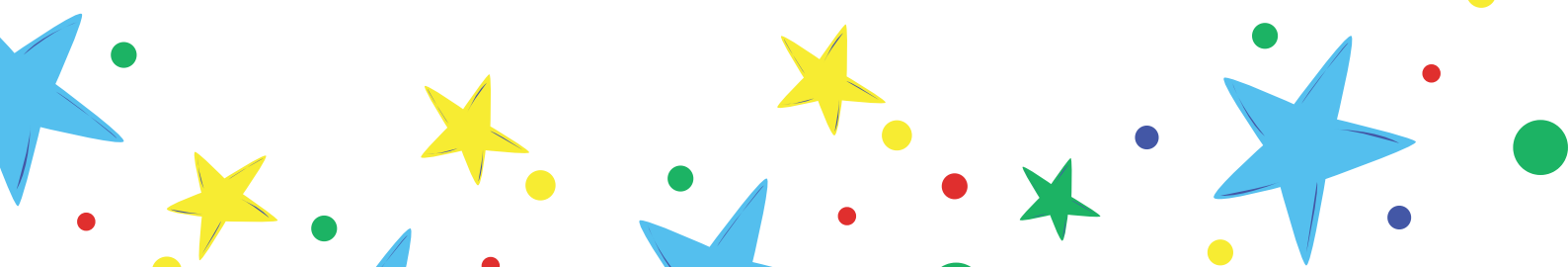
Days of Christmas
CLASS ATTENDANCE
COMPETITIONS



From the 24th November- 19th December
THE CLASS WITH THE HIGHEST ATTENDANCE% IN KS1 &
KS2 WILL RECEIVE A CHRISTMAS TREAT
AND
CHILDREN WITH 97- 100% ATTENDANCE AT THE END OF
THE 20 DAYS WILL BE ENTERED INTO A CLASS PRIZE
DRAW. THERE WILL BE 1 WINNER FROM EACH CLASS

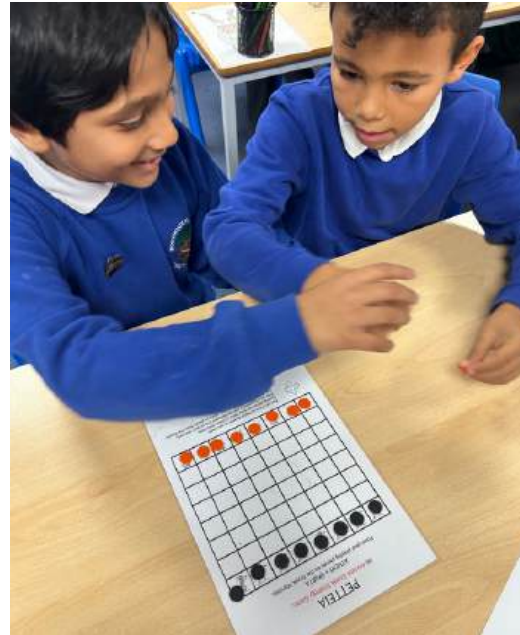


Thank you to all parents who attended our Apple Class 'Stay N Play' session this week!





Y5 Greek Day with Portals to the Past



Y3 Stone Age Day



**Children in Y3
wore 'animal
skins' for their
Stone Age Day!**







NORTHGATE AWARDS

This weeks winners are....

**Alba, Aksel, Parth, Ishaan,
Michael, Max and Amelie!**



Northgate Reading Challenge: Around the World!



We are excited to announce that Northgate has launched an Around the World Reading Challenge! **From Monday until 17th** December, your child has the opportunity to read 33 times and help their class travel the globe through books.

What do we ask?

Please encourage your child to read for 5–10 minutes daily.

Reading regularly helps develop vocabulary and supports success in all areas of life. Each time your child reads, sign their planner or Monkey Book. Teachers will check these weekly.

How does it work?

Every time your child reads, they earn flying miles for their class.

For example, if your child reads 5 times in a week, that's 5 flying miles added to the class total.

The class that travels the furthest will win a prize!

For instance, if a class reaches Belgium, they'll enjoy Belgian chocolate.

Important:

If your child is not yet reading independently, reading together counts! Just log it in the Monkey Book—it all makes a difference.

Let's make reading fun and inspiring!

"Readers are Leaders."

Thank you for supporting your child's reading journey.



B O O K





active future



FREE Active Future Winter Camp Crawley - HAF PROGRAMME

Active Future is proud to be working with West Sussex Council to offer FREE Winter Holiday Camps! Get ready for an action-packed winter with exciting activities like Nerf Battles, Dodgeball, and much more—all delivered by our experienced and enthusiastic team. Each day includes free delicious hot meals and healthy snacks to keep everyone fuelled for fun. Spaces are limited, so don't miss out—sign up now and join the Winter fun.

HAF is free to those accessing benefit related free school meals

When

22nd Dec and 23rd Dec
29th Dec and 30th Dec

Times

10 am - 2 pm

Who

Years 5-12

Where : Three Bridges Primary School, Gales Place, Crawley RH10 1PD



TO BOOK YOUR FREE PLACE

- Visit the online HAF booking portal.
- Register using your HAF code
- Once logged in, use the search function to find "Active Future Winter Champ Crawley"
- It should appear in the list of available providers

OR SCAN THE
QR CODE



If you have any questions please do not hesitate to contact

 afwestsussex@activefuture.info, 07460448840



active future



FREE Active Future Winter Camp Crawley -HAF SEND PROGRAMME

Active Future is proud to be working with West Sussex Council to offer FREE Winter Holiday Camps for SEND Children! Get ready for an action-packed Winter with exciting activities and experienced team. Each day includes free delicious hot meals to keep everyone fuelled for fun. Spaces are limited, so don't miss out—sign up now and join the winter fun.

HAF is free to those accessing benefit related free school meals

When

22nd Dec and 23rd Dec
29th Dec and 30th Dec

Times

10 am - 2 pm

Who

Years 5-12

Where : Three Bridges Primary School, Gales Place, Crawley RH10 1PD




TO BOOK YOUR FREE PLACE

- Visit the online HAF booking portal.
- Register using your HAF code
- Once logged in, use the search function to find "Active Future Winter Champ Crawley - SEND only"
- It should appear in the list of available providers

OR SCAN THE
QR CODE



If you have any questions please do not hesitate to contact

 afwestsussex@activefuture.info, 07460448840



NGPS CHRISTMAS SHOE BOX APPEAL

We are planning on supplying the shoe boxes again this Christmas to children/families who are in need; your donations, kindness and generosity are always very welcome.



Please fill a box with toiletries, toys, pants/socks/vests, sweets (no nuts items), games, books, puzzles, tooth brush & paste, hair accessories, anything suitable for a child aged 0-18.

Then wrap the whole box and clearly label gender and age on the outside. Please bring into school for the start of the December.



A massive thank you in anticipation of your generosity,

Brighton Hove & West Sussex
Deaf Children's Society




FESTIVE FAIR

Sunday 30th November

10AM - 4PM

FUN ACTIVITIES, STALLS, CRAFTS,
REFRESHMENTS, SANTA'S GROTTTO, RAFFLE
TEDDY TOMBOLA AND MORE

EAST WORTHING COMMUNITY
CENTRE,
BN11 2NQ



MONEY RAISED WILL GO TO
SUPPORTING DEAF CHILDREN
IN YOUR AREA !



Registered charity no 1061540

committee@bhwsdcs.org.uk

Affiliated with NDCS



National
Deaf Children's
Society
REGISTERED ASSOCIATION

CHRISTMAS HOLIDAYS
22ND DEC 2025 - 2ND JAN 2026

POUND HILL JUNIOR SCHOOL
CRAWLEY LANE POUND HILL
CRAWLEY, RH10 7EB

OVER 50 AMAZING ACTIVITIES!

- Bouncy Castles • Nerf Wars
- Fun Games
- Archery • Team Sports
- Plus Loads More
Action-Packed Fun!

5%
DISCOUNT
FOR SIBLINGS

Early Bird Discount – 10% Off!
Book by Saturday, 23rd November
using code: POUNDHILL10

Ofsted
Registered

 **Southeast
Kids Camps**

 [SOUTHEASTKIDSCAMPS.CO.UK](https://www.southeastkidscamps.co.uk)

 0333 444 5100



SUMMIT TENNIS

CRAWLEY PARKS



Walking to 6 yrs



5.5 yrs to 9 yrs



8.5 yrs to 13.5 yrs



Tennis for all



Free trial sessions!
Beginners welcome
WWW.SUMMIT-TENNIS.COM





Play tennis at Crawley Parks Tennis this autumn

Exclusive
offer for you

This autumn, why not hit the courts at

Maidenbower, Southgate, and West

Green Park? It's the perfect way to stay

active and have fun!

An annual household season ticket covering all courts costs Crawley residents just **£48.20 for the year per household**. A household season ticket covers up to five people and can be used for a maximum of five hours of tennis per week and a maximum of two hours of tennis per day. – That's just 19p a game!

Or Pay and Play sessions on our award winning courts cost from just £4. An additional fee of £2.10 for members or £4.30 for non-members will be payable for the use of floodlights at West Green Park.

Where to play

Here are the Crawley Parks Tennis venues where you can play:

 **Maidenbower Park**
Maidenbower Drive, Crawley RH10 7HG

 **Southgate Park**
Southgate Avenue, Crawley RH10 6HG

 **West Green Park**
Ifield Avenue, West Green, Crawley RH11 7AJ

Fancy Joining Crawley Parks Tennis?

We've got an exclusive treat for you—£5 off your annual seasonal membership at Crawley Parks Tennis!

To activate this offer – Please email parks.tennis@crawley.gov.uk quoting **SCHOOLOFFER**. We will then be in touch with a link to set up your discounted annual seasonal membership. For more information on the Crawley Parks tennis see: clubspark.lta.org.uk/Crawley



Free tennis programmes

Free, social tennis sessions. You can sign up to a session at **West Green Park** – no matter your age, background or ability – and play tennis for free on select Saturdays at 11am.

- any child can attend Free Park Tennis
- under 12 need to be accompanied throughout the session by an adult
- 13+ can come on their own but should be picked up and dropped off by an adult

See: clubspark.lta.org.uk/westgreen/coaching

Immediate advice if you have concerns about a young person's firesetting behaviour:

1. Consider your own actions and how they may influence the behaviour of the children you are responsible for.
2. Never leave matches or lighters around the home, even in pockets or handbags.
3. Never assume toddlers or infants are incapable of lighting a match or lighter.
4. Be aware they may hide matches and/or lighters in their clothing, possessions or bedrooms for use later.
5. Ensure that you have working smoke alarms on each floor and one in the bedroom of the young person.
6. Do not allow rubbish to pile up.
7. If you have an open fire make sure it is fitted with an adequate safety guard.



This photograph shows an example of a trained 'Firewise' advisor working with a young child to discuss what is 'safe or unsafe' and the reasons they have for their decisions.

This activity allows the child to talk about experiences they have had with fire and for the advisor to educate about making safe choices.



If you would like more information about the Firewise scheme or to make a referral, please contact us:

0330 2222 515

firewise@westsussex.gov.uk

www.westsussex.gov.uk/fire

WS32648 07.19

FIREWISE

PROTECTION EDUCATION
PREVENTION



West Sussex
Fire & Rescue Service

Do you have concerns about a young person and fire?

Why do young people play with fire?

Young people may play with fire for various reasons, for example, a natural curiosity or seeking attention. Without help and guidance, firesetting behaviour can escalate and lead to more serious consequences.

We can reduce the chances of young people starting fires by understanding and challenging their behaviour and by giving them some basic fire safety advice.

We can give guidance to parents, carers and professionals who may be concerned about a young person playing with fire.



Watch out for these tell-tale signs of firesetting behaviour:

- Matches or lighters hidden in bedrooms, school bags or coats.
- An unusual fascination with fire.
- Small burn holes on carpets, bedding and furniture.
- Scorch marks in hidden locations such as in wardrobes or cupboards.
- Burnt paper or objects in bins.
- Burnt matches lying around.
- Noticing the smell of burning.
- Unexplained fires in the home or garden.
- Noticing injuries to skin e.g. burns.



Our Firewise Scheme...

Aims to eliminate the likelihood of young people firesetting in the future, by educating them about the dangers and impacts of fire, enabling them to make safer choices.



All of our 'Firewise' advisors will provide information, support, advice and guidance to you and the young person.

Our advisors are available to visit schools, home or other establishments. Permission of parents/carers is required before any visit is undertaken.

Once a referral is received, an advisor will make contact to arrange a visit at a time and place convenient for you and the young person.

A menu of flexible and tailored activities, have been created to develop and enhance the young person's fire safety knowledge.

Through partnership working, we can liaise with organisations that assist the young people with other needs that they may have.



Player Development Programme Under 6/7 Trials

Chelsea FC Soccer Schools are pleased to offer Under 6 – Under 7 players (school years 1 & 2) the opportunity to attend a Free Trial session at one of our Sussex Player Development Centres. If successful, players will be invited to join our regular training and become a part of our Player Development Programme, providing safe, fun and engaging weekly training for players to develop their footballing potential.

Steyping PDC

Trial Date and Timings: Monday 17th November, 5.15 – 6.30pm

Venue: Steyping Town FC, BN44 3RQ

Course code: PDPT-STCFC-X-42

Cuckfield PDC

Trial Date and Timings: Monday 17th November, 5.30-6.45pm

Venue: Warden Park Academy, RH17 5DP

Course code: PDPT-WPA-X-31

Horsham PDC

Trial Date and Timings: Wednesday 19th November, 5.15 – 6.30pm

Venue: Horsham Football Club, RH13 0AX

Course Code: PDPT-HFC-X-93

Crawley PDC

Trial Date and Timings: Thursday 20th November, 5.15 – 6.30pm

Venue: The K2 Leisure Centre, Crawley, RH11 9BQ

Course Code: PDPT-K2LC-X-105

Littlehampton PDC

Trial Date and Timings: Friday 14th November, 5.30 – 6.45pm

Venue: The Littlehampton Academy, BN17 6FE

Course Code: PDPT-TLA-X-70



To register your child's attendance please visit our website at www.chelseasoccerschools.co.uk or use the above QR code and search for your preferred venue using the trial course codes.

Can't attend these dates or wish to enquire about other age groups/venues? Please contact Presley.geal@chelseafc.com

Chelsea Football Club Limited

Cobham Training Ground
60 Stoke Road

Stoke d'Abernon, Cobham
Surrey KT11 3PT

T: 01932 596 150
chelseafc.com

Reg No: 01965140
Reg Office: Stamford Bridge



Bingx

LIVE NATION



GINGLE

A GINGERBREAD HOUSE

One of our last year's winners!



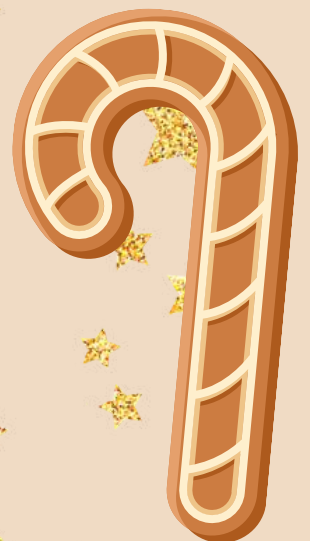
Family Competition

20th December
1pm or 4pm



£10
PER
GROUP

More Information:





Winter

KIDS CLUB

EXTRAVAGANZA

BOOKINGS NOW OPEN!

22ND/23RD/30TH/31ST DECEMBER (9.00am - 4.00pm *1pm finish on 31st)

HAF spaces - <https://haf.bookinglab.co.uk/westsussex/37147/login>

Paid spaces - www.bookwhen.com/globefitkidsclubs

www.globefit.co.uk E: info@globefit.co.uk

- Free HAF places
- Lunch and snacks Included
- Childcare vouchers accepted
- Tax-Free Childcare Payments accepted
- Discounts for siblings and block bookings

Suitable for
ages 5-11

BROADFIELD COMMUNITY CENTRE





FOUNDATION YOUTH FOOTBALL KICKS OFF

Starting now!

Mini Reds

Our Saturday football for 5-7 year olds is back! If your child is getting into football or wants to try for the first time then we are hosting this on the Broadfield Stadium ball court.

- **Saturdays 9-10am**



Saturday Soccer Centre

For ages 8-12 the Centre is run by qualified football coaches aimed at developing young players in a fun & supportive environment.

- **Saturdays 10:30 - 12:00pm**

Goalkeepers

Our goalkeeper training centre offers specialist knowledge and coaching to help young aspiring girl and boy 'keepers to fill their potential.

- **U7-U11 - Thursdays 5-6pm**
- **U12-U16 - Thursday's 6-7pm**



Community Foundation

www.ctcommunityfoundation.com



PLAY

an instrument

Let music change your life



westsussexmusic.co.uk
01403 286330

Supported using public funding by



ARTS COUNCIL
ENGLAND

Autumn Term Diary Dates 2025

November

26th - New Entrants Open Afternoon 1.30pm

27th - Dentist visit Reception and Nursery

December

1st - WS Fire and Rescue Services visit Reception

★ 2nd - Nursery Christmas show @ 1.45pm

2nd - Y6 Trip to Shelter Brighton (1 and half classes)

3rd - Y6 Trip to Shelter Brighton (1 and half classes)

3rd - WS Fire and Rescue Services visit Reception

3rd - AIM High Maths - Y5 and Y6

3rd - Rocksteady Concert for Parents (Invite only)

4th - Flu Immunisations YR - Y6

★ 8th - KS1 Christmas Performance - 2pm

★ 9th - KS1 Christmas Performance - 9.30am

★ 10th - KS1 Christmas Performance - 9.30am

11th - Christmas Lunch and Christmas Jumper Day

15th - PTFA Christmas Pop Up Shop

★ 15th - Reception Christmas Performance - 2pm

★ 16th - Reception Christmas Performance - 9.30am

17th - PTFA Christmas Raffle Draw

18th - Class Christmas Parties and crafts

19th - School finishes at 1.30pm for Christmas Holidays

HOUSE POINTS OF THE TERM!

JADE
4102

RUBY
4246

SAPPHIRE
3242

AMBER
3220